



PHOENIX CORPORATION

PROFESSIONAL DESIGN AND FABRICATION OF PRE-ENGINEERED
BUILDINGS AND STEEL STRUCTURE

PHOENIX CORPORATION Profile



FACTORY:

- Lot 37 – Road #3 – Linh Trung EPZ & Industrial Park III
- Tel: (+84-66) 3898063 – 3898064
- Fax: (+84-66) 3898085
- Email: phoenix@phoenixcorp.com.vn

LIAISON OFFICE:

- 45 Phan Ba Phien St., Ward 12, Tan Binh Dist., HCM City
- Tel: (+84-8) 39485028 – 39485031
- Fax: (+84-8) 38118061
- Web: www.phoenixcorp.com.vn



PHOENIX CORPORATION

PROFESSIONAL DESIGN AND FABRICATION OF PRE-ENGINEERED
BUILDINGS AND STEEL STRUCTURE

CONTENTS

I. About Phoenix	03
II. Scope of Business & Procedure Flow Chart	20
III. PHOENIX Advantages	23
IV. PHOENIX Typical Projects and Clients	24



I. ABOUT PHOENIX

- **PHOENIX CORPORATION** was established in Ho Chi Minh City, Vietnam in 2006
- **PHOENIX** is a specialist in the design, fabrication and erection of Pre-Engineered steel building for factories, warehouses, showrooms, exhibition hall, etc.
- **PHOENIX CORPORATION'S** Founders have been experienced in construction consultant field. That's why **PHOENIX** is very proud to provide the best optimal solutions of design and professional management for your projects.
- ✓ **Founders/ Board of Directors: Mr. Nguyen Bao Thuy (Director)**
Mr. Le Minh Chau (Co-Founder)
- ✓ **Professional project management team with Staff & Workers: over 60**
- ✓ **Productivity for structural steel fabrication are 4,000 Tons/Year:**





VISSION -MISSION

➤ **OUR VISION**

To be **the innovative manufacturer** and **the premier service, reliable.**
Solution provider the steel structure building industry

➤ **OUR MISSION**

To **supply high-quality steel structure** for building industry, related services and solutions to Client

To utilizing **innovative technologies** within an environment of

motivated employees, focused on continuous improvement, more experience in construction consultant field leading to added value for our customers



FACTORIES

- ✓ Located at LINH TRUNG EPZ & Industrial Park III
- ✓ Productivity for structural steel fabrication are 4,000 Tons/Year:
 - Equipped with full automatic welding line;
 - Sub-Merger arc weld method;
 - Shot blasting system for steel surface
 - Cutting machine
 - Assembly machine
 - Punching machine
 - Purlin / Roof sheet forming machine

BỘ XÂY DỰNG
CỤC QUẢN LÝ
HOẠT ĐỘNG XÂY DỰNG

CỘNG HÒA XÃ HỘI CHỦ NGHĨA VIỆT NAM
Độc lập - Tự do - Hạnh phúc

CHỨNG CHỈ NĂNG LỰC HOẠT ĐỘNG XÂY DỰNG

Số: BXD-00002247

Tên tổ chức: CÔNG TY CỔ PHẦN PHƯỢNG HOÀNG

Giấy chứng nhận đăng ký doanh nghiệp/ Quyết định thành lập số: 3900388528

Ngày cấp: 13/3/2006, đăng ký thay đổi lần thứ 5 ngày 14/4/2014.

Nơi cấp: Sở Kế hoạch và Đầu tư tỉnh Tây Ninh.

Tên người đại diện theo pháp luật:

Ông/Bà: Nguyễn Bảo Thụy

- Chức vụ: Giám đốc

Địa chỉ trụ sở chính: Lô 37B, Khu chế xuất và công nghiệp Linh Trung 3, xã An Tịnh, huyện Trảng Bàng, tỉnh Tây Ninh, Việt Nam.

Số điện thoại: 066.3898063

Số fax: 066.3898065

E-mail:

Website:

Phạm vi hoạt động xây dựng:

1. Thi công xây dựng công trình:

- Công nghiệp nhẹ: Hạng I

- Dân dụng: Hạng III

Chứng chỉ này có giá trị đến hết ngày: 13/7/2022.

Hà Nội, ngày 13 tháng 7 năm 2017

CỤC TRƯỞNG



TS. Bùi Trung Dũng

(Ban hành kèm theo Quyết định số: 53/QĐ-HĐXD-DN ngày 13/7/2017)

STEEL PLATE STORAGE

- FOR BUILT-UP (PLATES) :

A-572 Gr 50

SM-490YA

Q-345B

- FOR HOT ROLLED SECTION :

JIS G3101/G3192 – SS400



CUTTING MACHINE





H – BEAM AUTO ASSEMBLY MACHINE





AUTO SUBMERGE ARC WELDING MACHINE



H-BEAM FLANGE STRAIGHTENING AUTO MACHINE



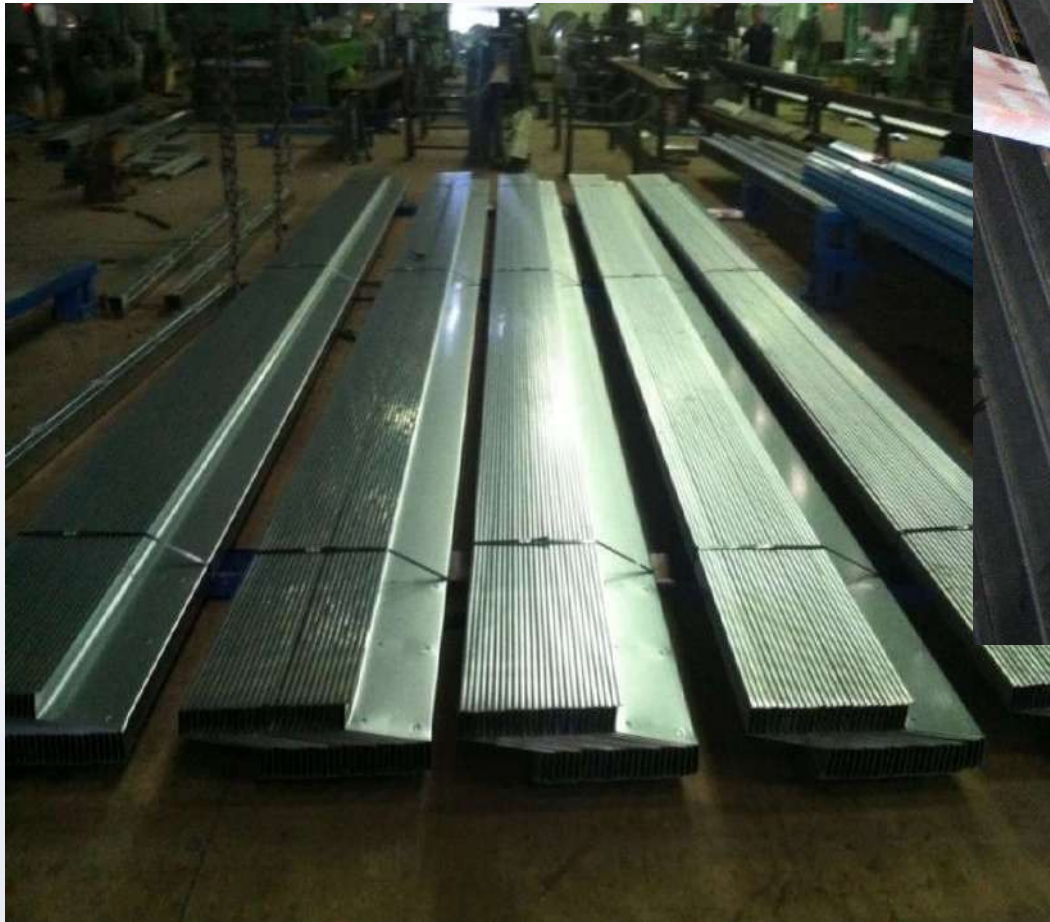
PUNCHING MACHINE & MAGNETIC DRILLING MACHINE



PURLIN FORMING MACHINE

GALVANIZE PURLIN

- G-450 ($F_u = 4500 \text{ Kg/cm}^2$)
- AS 1397-1993, Z-275 coating



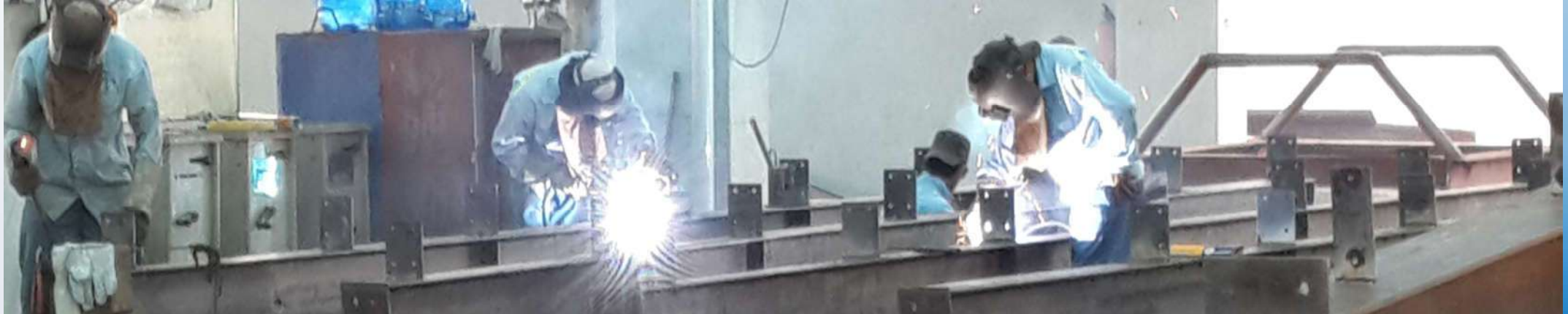


ROOF SHEET FORMING MACHINE





FINISHING WELD



CLEANING (BY STEEL BRUSH)





SHOT BLASTING SYSTEM FOR STEEL SURFACE



PAINTING





FINISHED PRODUCTS





DELIVERY TO SIZE





II. SCOPE OF BUSINESS & PROCEDURE FLOW CHART

- **PHOENIX** is a specialist in the design, fabrication and erection of Pre-Engineered steel building for factories, warehouses, showrooms, exhibition hall, etc.

Factory



Warehouse



Parking



Cinema



Station

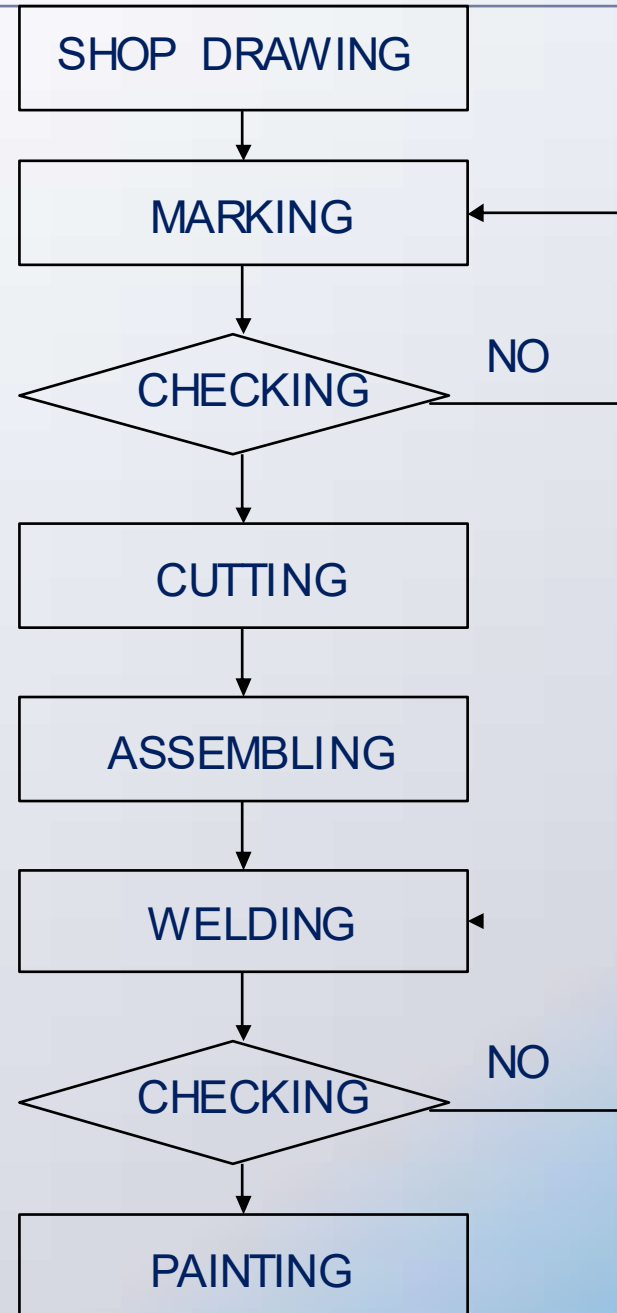


Showroom



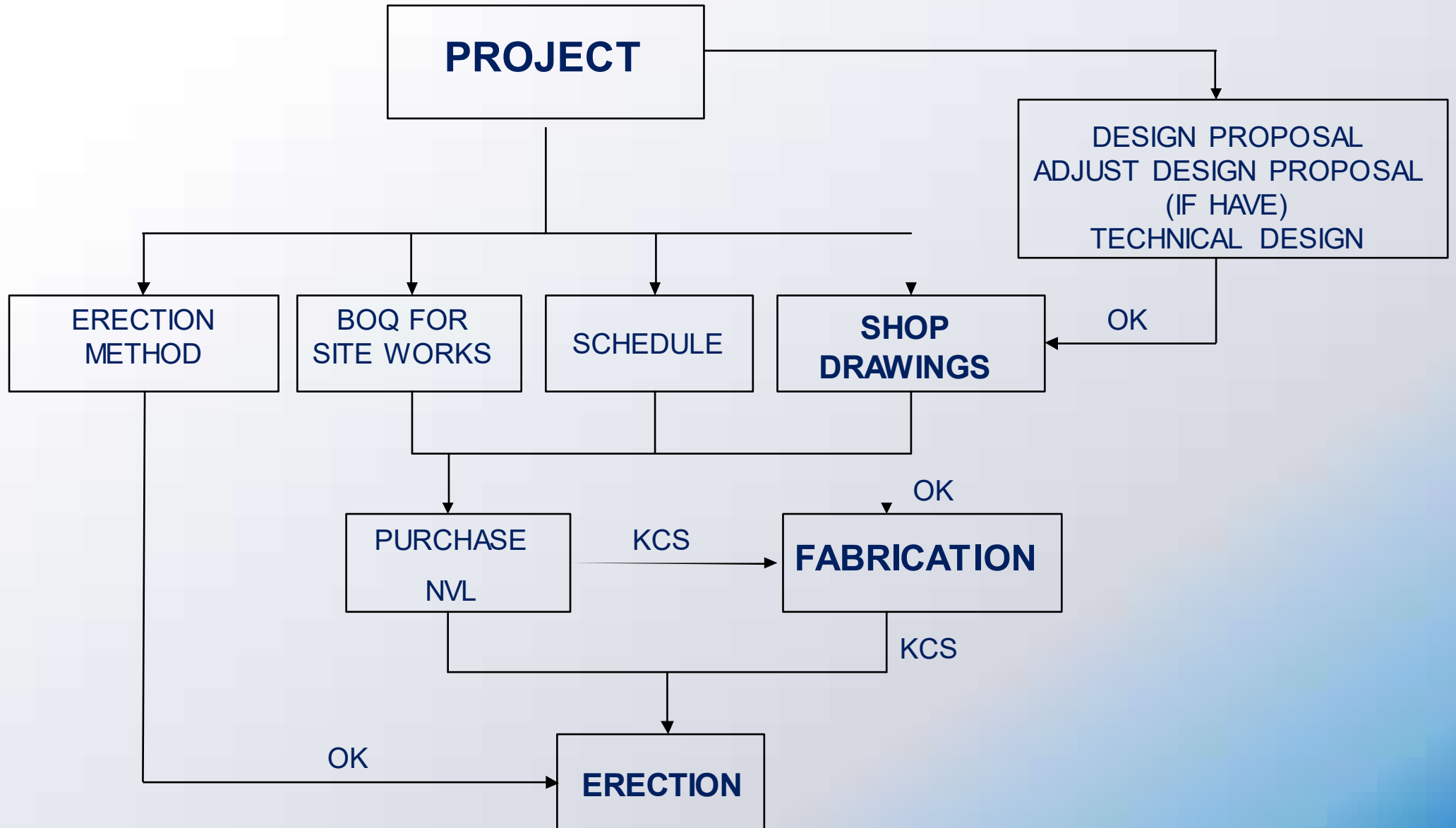


FABRICATION PROCEDURE CHART





PROJECT ORGANIZATION CHART





III. PHOENIX ADVANTAGES

PHOENIX ALWAYS PROVIDE ADVANTAGES

As dealing with PHEONIX Corporation, you are always provided the advantages from the following:

- 1. Diversified and efficient design solutions**
- 2. Apply international standard / Vietnam standard for design and fabrication**
- 3. Reasonable competitive prices**
- 4. Fast delivery in erevywhere**
- 5. Professional management**
- 6. Experienced and skilled workforce**



IV. PHOENIX TYPICAL PROJECTS AND CLIENTS

KEY CUSTOMERS





Past Project:

I&L FACTORY

Investor : L&L MEDICAL TECHNOLOGY CO.,LTD - TAIWAN

Scale : 20,000 m²

Location : MY PHUOC ip – BINH DUONG



PROJECT : L&L MEDICAL TECHNOLOGY





Past Project:

KYODO PRINTING

Investor : KYODO PRINTING (VIETNAM) CO., LTD - JAPAN

Scale : 3,500 m²

Location : AMATA IP – DONG NAI





Past Project:

NIKKISO FACTORY

Investor : NIKKISO VIETNAM CO.,LTD - JAPAN

Location : TAN THUAN IP – HO CHI MINH CITY





Past Project:

ECLAT FABRICS FACTORY

Investor : ECLAT FABRICS VIETNAM CO.,LTD - TAIWAN

Scale : PHASE 1 - 102.300 M2 / PHASE 2 - 43.800 M2

Location : MY XUAN IP – BA RIA VUNG TAU





Past Project:

HOTTA FACTORY

Investor : HOTTA VIETNAM CO.,LTD - JAPAN

Scale : 4,000 m²

Location : BAU BANG IP – BINH DUONG





Past Project:

CCL LABEL FACTORY

Investor : CCL LABEL VIETNAM CO.,LTD - JAPAN

Scale : 6,000 m²

Location : VSIP II ip – BINH DUONG





Past Project:

ALLIANCE ONE FACTORY

Investor : ALLIANCE ONE APPAREL VIETNAM CO.,LTD - THAILAND

Scale : 68,000 m²

Location : GIAO LONG IP – BEN TRE

www.phoenixcorp.com.vn





Past Project:

SOLTEC FACTORY

Investor : SOLTEC VIETNAM CO.,LTD - JAPAN

Scale : 5,000 m²

Location : NHON TRACH IP – DONG NAI





Past Project:

KASEI JYUKO VIETNAM FACTORY

Investor : ASAHI KASEI JYUKO VIETNAM CO.,LTD - JAPAN

Scale : 10,000 m²

Location : AMATA IP – DONG NAI





Past Project:

THAI SON COLD STORAGE

Investor : THAI SON CO.,LTD - VIETNAM

Scale : 5,000 m²

Location : TRA NOC IP – CAN THO





Past Project:

LAN TRAN FACTORY

Investor : LAN TRAN CO.,LTD - VIETNAM

Scale : 12,000 m²

Location : TRANG BANG ip – TAY NINH





Past Project:

AN PHU AQUA FACTORY

Investor : AN PHU CO.,LTD - VIETNAM

Scale : 15,600 m²

Location : DONG THAP





Past Project:

E-TOP FACTORY

Investor : E-TOP VIETNAM CO.,LTD

Scale : PHASE 1 - 18,000 m² / PHASE 2 – 61.500 m²

Location : NHON TRACH ip – DONG NAI





Past Project:

BOURBON WAREHOUSE

Investor : BOURBON BENLUC JS CO.

Scale : 10,000 m²

Location : LONG AN





Past Project:

NIPPON KONPO WAREHOUSE

Investor : NIPPON KONPO (VIETNAM) CO., LTD - JAPAN

Scale : 31,000 m² Warehouse + 15,000 m² Steel mezzanine floor

Location : TAN DONG HIEP B IP – BINH DUONG





Past Project:

SAKURA COLOR PRODUCTS

Investor : SAKURA COLOR PRODUCTS VIETNAM Co.,Ltd

Scale : 5.520 m²

Location : VSIP II EXT IP – BINH DUONG





Past Project:

TAN SON NHAT AIRPORT CAR PARK

Investor : TCP Joint Stock

Item : Façade system

Location : TAN SON NHAT AIRPORT – HO CHI MINH





Past Project:

NIPPON RIKA

Investor : NIPPON RIKA Co.,Ltd

Scale : 5.665 m²

Location : VSIP II EXT IP – BINH DUONG



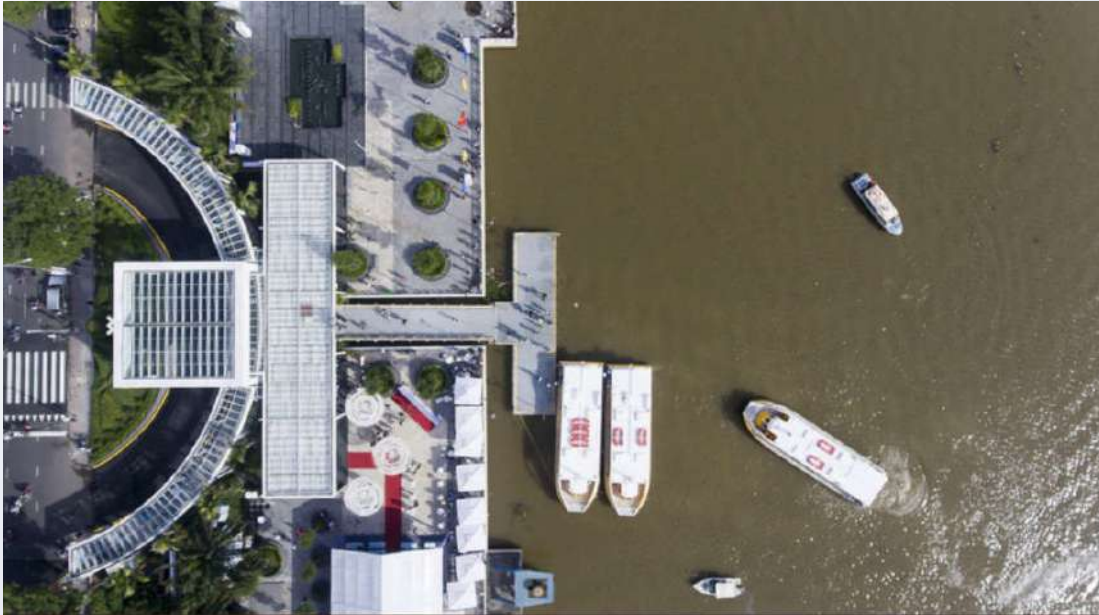


Past Project:

BACH DANG STATION

Investor : DAILLY Co.,Ltd / GREEN LINE DB Co. Ltd

Location : DISTRICT 1 - HO CHI MINH



Toàn cảnh bến tàu buýt tại bến xuất phát Bạch Đằng, Q.1 - Ảnh: NAM TRẦN



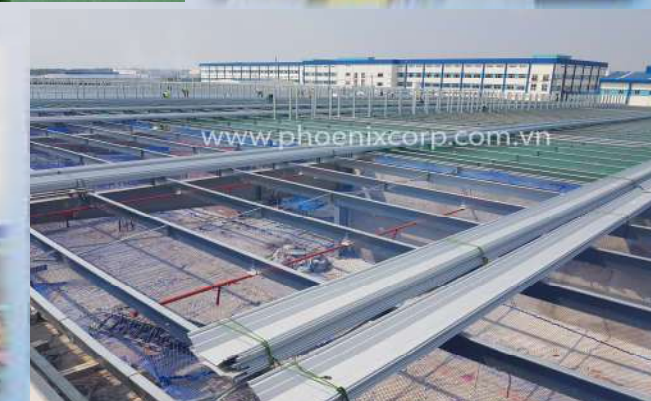
Past Project:

UCHIYAMA FACTORY

Investor : UMC Co.,Ltd

Scale : 23.850 m²

Location : DAI DANG IP – BINH DUONG





Past Project:

HARIKI PRECISION FACTORY

Investor : HARIKI PRECISION VN Co.,Ltd
Location : VSIPIP – BINH DUONG

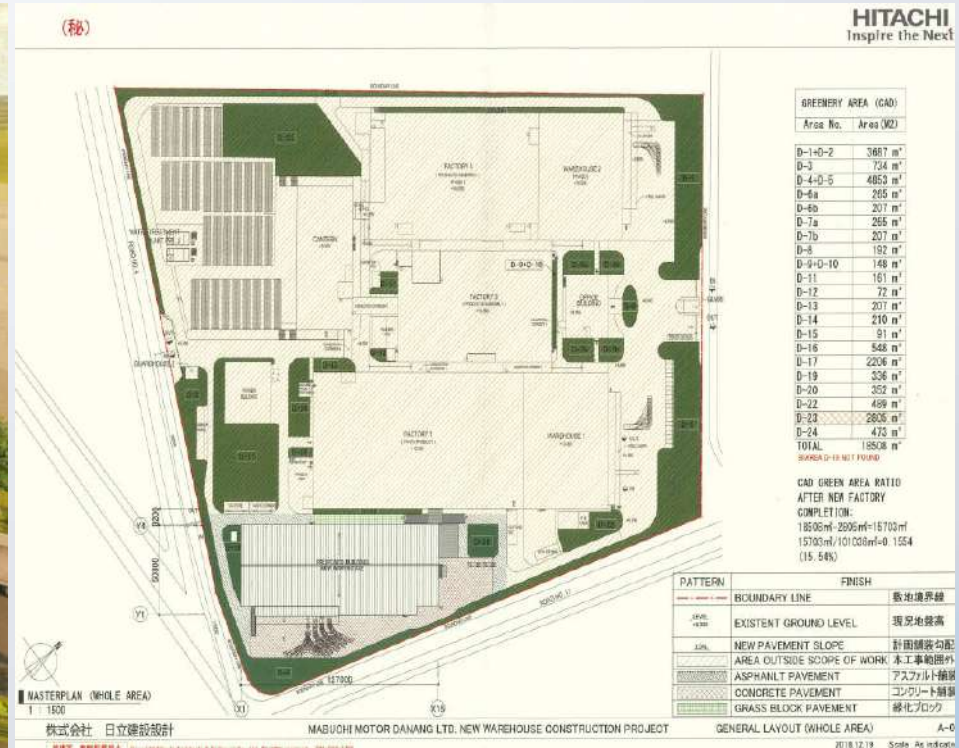




Past Project:

MABUCHI FACTORY

Investor : MABUCHI MOTOR Co. Ltd
 Scale : 7.270 m²
 Location : HOA KHANH IP – DA NANG





Past Project:

VINA WASHIN PROJECT

Investor : VINA WASHIN ALUMINUM Co.,Ltd

Scale : 6.836 m²

Location : MY PHUOC III IP – BINH DUONG





OUR REPUTATION SHALL BE BASED ON YOUR SUCCESS

PHOENIX ALWAYS WORKS TOGETHER WITH YOU